



TECNO

**LANEMA**

PRECISION  
**MACHINING**  
ENGINEERING **PLASTICS**  
AND TECHNICAL **ALUMINIUM**

# TABLE OF CONTENTS

- What we do, we do for our customers 03
- The assurance of the best solution 04
- Quality assurance 06
- Industry 4.0 08
- Main tools 10
- CMM Control 12
- Improved responsiveness 14
- Cost reduction 16
- Sustainability 18
- The Results 20
- Why TecnoLANEMA? 22



## WHAT WE DO, WE DO FOR OUR CUSTOMERS

### PRECISION MACHINING SERVICES

TecnoLANEMA is the brand representing the precision machining services of engineering plastics and technical aluminium business area and the main internationalization driver of our company Poly Lanema, Lda and of the Group itself.

The cumulative know-how, continued investment in Research & Development and Innovation, along with passion for what we do, enable us to provide an innovative, swift and precise response to the needs of our customers, while taking up a leading position worldwide in the production of high-tech parts.

Thanks to an optimized, balanced and certified combination of a specialized multidisciplinary team, with the most advanced technical software and hardware resources, TecnoLANEMA creates value for its customers/partners throughout the entire project, from advising on materials to optimized development of each part.

Customers are the focus of our actions, as ethics, dedication, professionalism, commitment to quality and respect for the environment have all enabled us to warrant their trust on a daily basis.



Best Machining Solution



Quality Assurance



Improved Delivery Times



Cost Reduction



Sustainability



## THE ASSURANCE OF THE BEST SOLUTION

25 YEARS OF CUMULATIVE KNOW-HOW

The entrepreneurial path taken by TecnoLANEMA and by Poly Lanema, Lda. is characterized by solid and constant evolution, as we have attained the status of national and international benchmark, namely in the areas of engineering plastics and technical aluminium.

The achieved success results from complete dedication to each project, customer and partner, using a strategy focused on the needs of each one, and translating into regular qualification of both technical and technological resources to respond to the highest market demands and to anticipate future needs.

Along with product/project development, we ensure the success of their implementation, as we rely on a young but experienced, highly qualified and multidisciplinary team with enormous team spirit.

With regard to projects, we perform a careful analysis based on assumptions such as the end functional quality of each part, while selecting the best tools. This is aimed at the optimized production of the aforementioned parts, in order to submit competitive proposals for each customer's project.

As for materials, on top of our team's technical mastery regarding aluminium alloys and engineering plastics, we also count on strong backing from our main suppliers/partners, all of which are combined into effective teamwork and in a continuous set of training initiatives to constantly keep knowledge and skills up to date.

This way, over time we have managed to achieve and accumulate a high level of machining expertise, namely in terms of prototyping and production of large and medium-sized series for a wide variety of industries.



25 years of know-how in the areas of engineering plastics and technical aluminium

Highly skilled technical teams

Vast experience in precision machining

Multi-industry expertise and knowledge

Partners with the world's leading manufacturers



## ADVANTAGES

- ISO 9001 certification
- Implementing of AS 9100 and AS 9120 certification
- The industry's most advanced project and production management
- Modern production and quality control equipment
- Materials Made in Europe
- Dedicated machining areas
- A close, dedicated relationship with the customer/partner

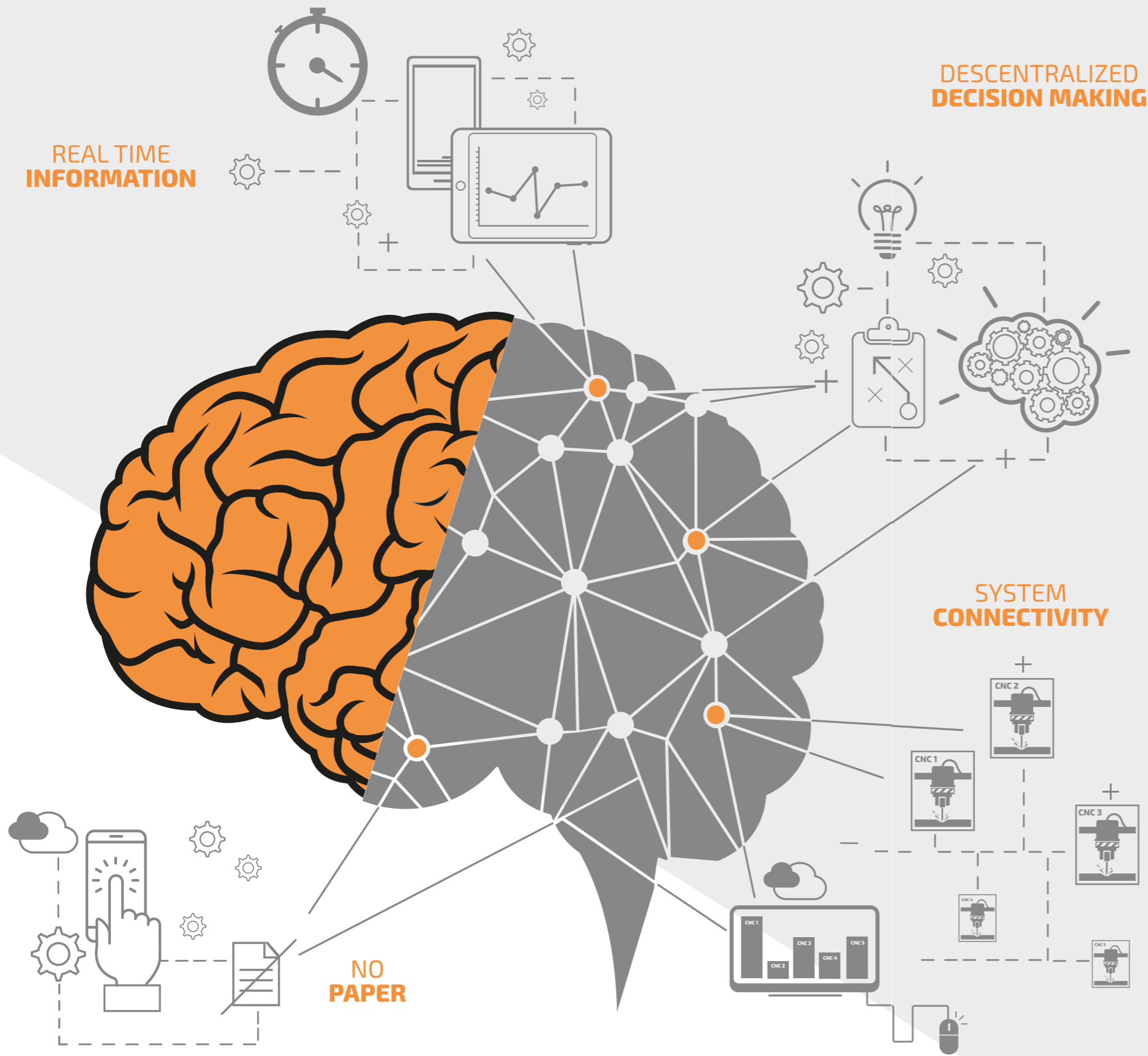


# QUALITY ASSURANCE

CERTIFICATION

Despite having the ISO 9001 certification, we are in the process of obtaining various certifications for different industries, in order to validate the quality of Tecnolanema's capabilities and skills, in the service of our customers/ partners.





**PLANNING**



# INDUSTRY 4.0

## THE PROCESS

Every project complies with a stringent procedural structure, which assures the quality and traceability of the entire process overall. Every project undertaken has to be thoroughly detailed, planned and conciliated, so as to meet every requirement and customer deadline.

In order to enhance efficiency and competitiveness, Tec Nolanema involved all of its employees in developing a new and revolutionary technological strategy, by implementing a set of tools and systems that apply the principles of the so-called 'industry 4.0,' namely connectivity among (human and technological) systems, reducing/eliminating the use of paper ("no paper") and the virtualization of reality, by providing real-time information and decentralizing the decision-making process.

The digitalizing of our company now enables us to conduct real-time remote management of our machining's entire production process, which is able to make decisions in an autonomous/ decentralized manner. Such innovation results in greater flexibility in managing and programming production, greater balance between processes and jobs, as well as significant improvement in efficiency and efficacy throughout the entire process.

With a long-term outlook, we also ensure the replication of any component version for a period of 10 years, thanks to our system enabling documentary traceability.

**Let's turn our passion for what we do into innovation!**





**PLASTIC MACHINING AREA**



**ALUMINIUM MACHINING AREA**

# MAIN TOOLS

The tools we have at TecnoLANEMA, which are used to make parts for the various projects, constitute one of Europe's most modern machine pools.

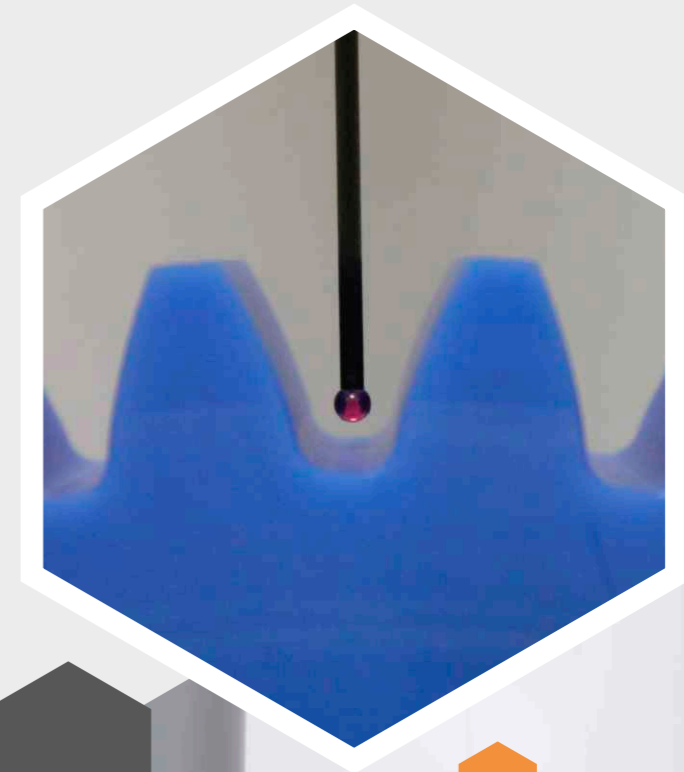
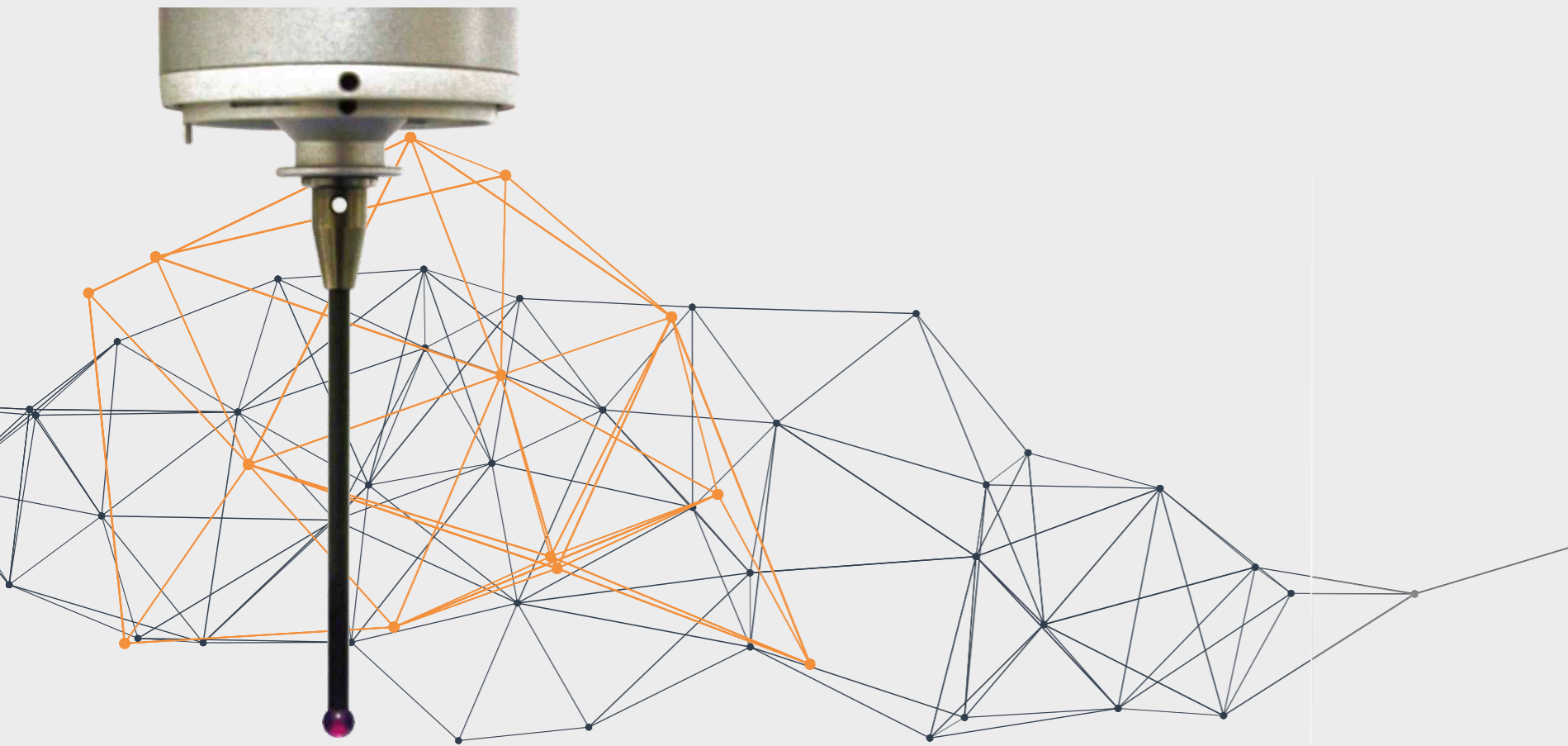
Additionally, in order to respond to specific requirements from some industries, we have created specific production areas according to the type of material (an area for machining plastics and another for machining aluminium), so as to prevent contamination with particles from the different materials.

20

**CNC Milling Machines**  
up to 5 axles with machine strokes  
up to 5400x2080x1060mm

6

**CNC Turning Machines**  
up to 5 axles with machine strokes  
on guides up to Ø 610 mm



# CMM CONTROL

To ensure the quality of the end product, at TecnoLANEMA, every project undergoes dimensional control throughout the various stages of the production cycle, using various measuring tools (including 3D), examining surface conditions and early identification of possible deviations and geometric defects.



**Dimensional control systems**  
up to 2500x1500x1000mm





## IMPROVED RESPONSIVENESS

MATERIALS – EQUIPMENT – PROCESS  
STOCK COMBINATION

With regard to equipment with state-of-the-art technology and the production process, it is relevant to add and point out that such tools and processes are brought about thanks to an enormous financial investment made at TecnoLANEMA, by our company's board of directors, in order to provide and supply our customers with services and products of superior quality.

Such production elements are enhanced using resources that TecnoLANEMA already had at its disposal: one of Europe's largest technical materials warehouse, with thousands of references and tons of material in stock, namely engineering plastics and technical aluminium.

In addition, and because we believe in the value of partnerships with customers and suppliers, it is also thanks to strategic and preferential partnerships that we have with some of our suppliers, whether of materials or of freight companies, that we have achieved a level of performance attained by few companies worldwide. We currently have access to a matchless portfolio of technical solutions and to a level of swift, quality delivery services, which we share with our customers on a daily basis.

Thus, regardless of each project's degree of complexity or level of demand, TecnoLANEMA has what it takes to ensure top-notch responsiveness in the market, particularly for urgent projects.



**Strategic  
Partnerships**



Equipment with  
**State-of-the-art  
Technology**



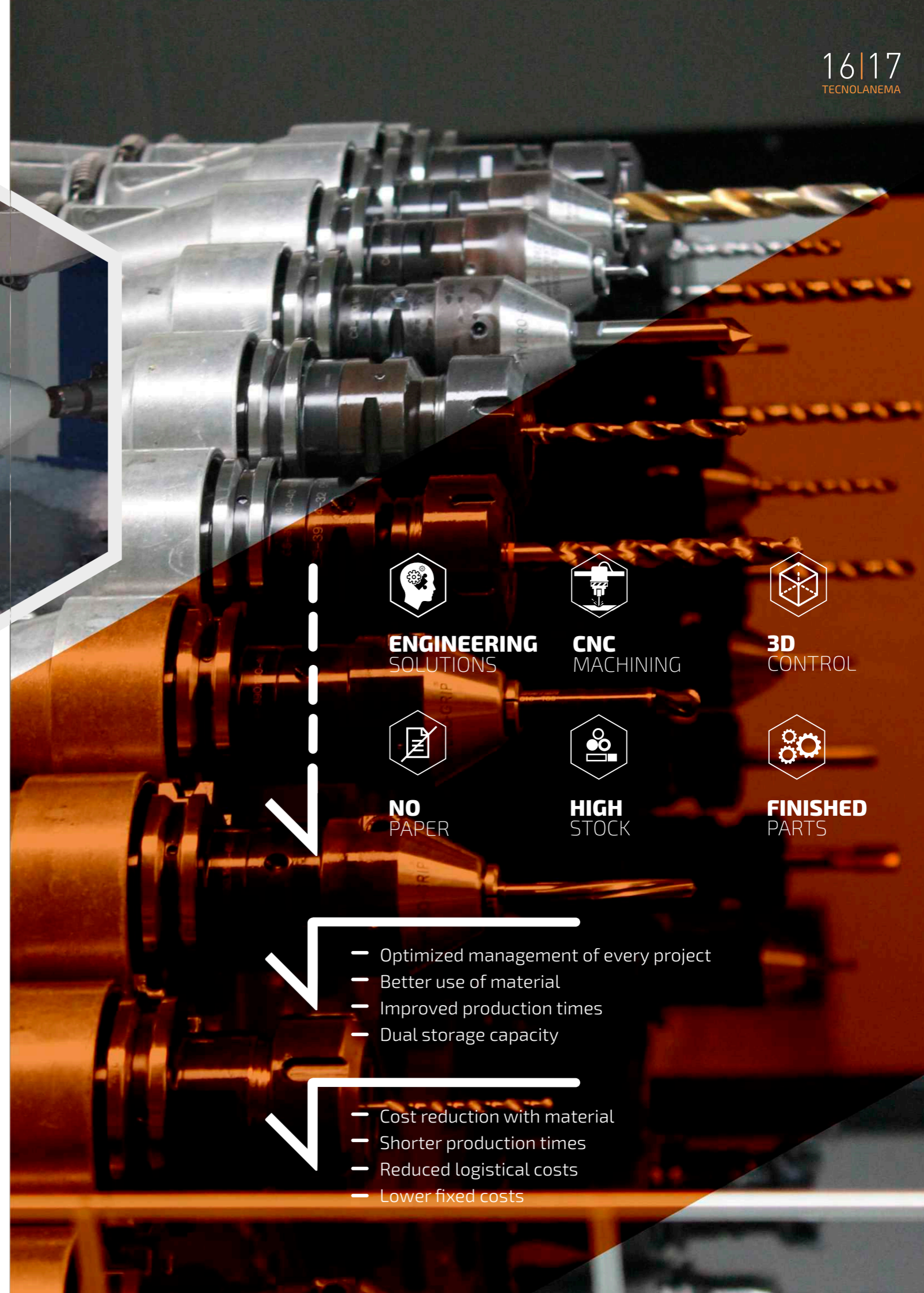
**Modern  
Production  
Process**



**Availability  
of Materials**







# COST REDUCTION

THROUGHOUT THE ENTIRE PROCESS

The optimization of the production process generates both productivity and financial gains, in many cases obtained simply via cost reduction, and this is something we share and want to share with our customers.

We point out that many of the costs we are able to reduce for our customers go beyond the price as given, as our solutions ensure cost reduction both upstream and downstream from their own production processes, which often go unnoticed with organizations.



**ENGINEERING  
SOLUTIONS**



**CNC  
MACHINING**



**3D  
CONTROL**



**NO  
PAPER**



**HIGH  
STOCK**



**FINISHED  
PARTS**

- Optimized management of every project
- Better use of material
- Improved production times
- Dual storage capacity

- Cost reduction with material
- Shorter production times
- Reduced logistical costs
- Lower fixed costs



## SUSTAINABILITY

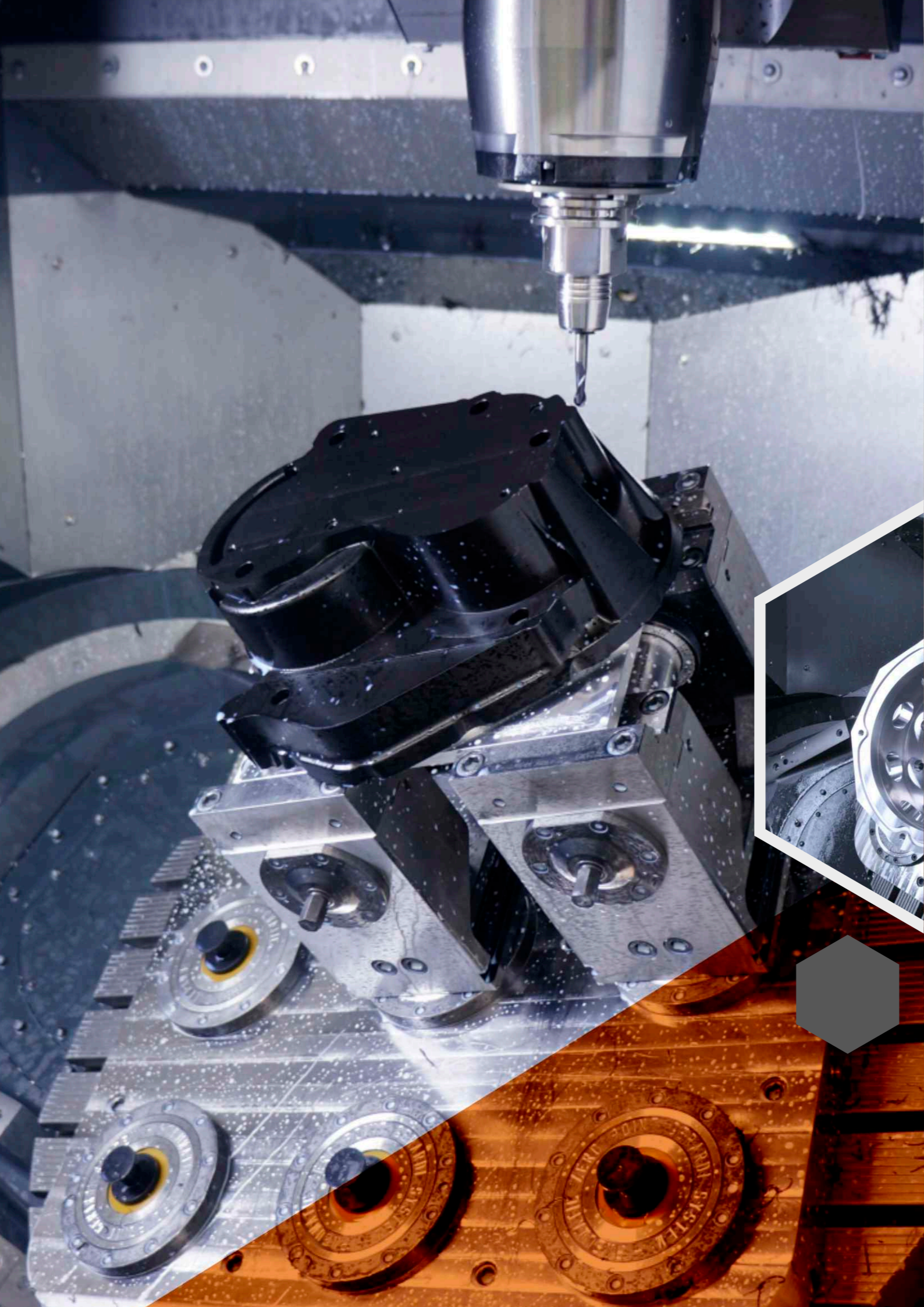
### ORGANIZATION AND ENVIRONMENT

Aware of our social, economic and environmental responsibilities, at TecnoLanema we have put in place a streamlining and utilization plan which has enabled us to reduce our environmental footprint over the years.

This result has been achieved by optimizing and virtualizing the production process, which not only generates gains in productivity, but also allows rationalizing and increasing energy efficiency, along with decreased use of paper, via our "no paper" project, thereby contributing toward the very sustainability of our corporate project.

On the other hand, from an organizational and economic standpoint, all of our stakeholders (customers, board of directors, employees, suppliers...) are aware of the corporate project's high rate of sustainability within the Lanema Group, not only thanks to our historic path in growth and innovation, but also given our current position in the international market as well as our investment and strategic projects, either already made or currently ongoing, which hinge on our emphasis on quality and continuing innovation.






## THE RESULTS

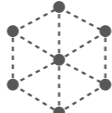
The logical and concrete result of interconnecting the various resources we currently have at our customers' disposal comprise CNC precision machining services with high quality, accuracy and finishing.

This is why we feel that we positively and decisively contribute toward high productivity and profitability throughout the remaining value chain, while creating actual gains in competitiveness for our customers.

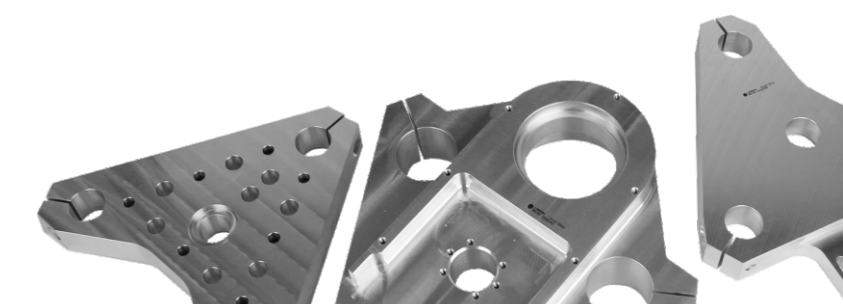
Thanks to this level of performance, we have been gaining more work, while warranting the trust of new and existing national and international customers from a wide variety of industries.

Such gains have been achieved through a sustained and robust increase:

 In the level of customer **satisfaction**  
And loyalty

 in the level of **complexity** of awarded projects

 In **exports**



# WHY TECNOLANEMA? EVERY CUSTOMER IS A PARTNER

At Tecnolanema, our basic goal is to achieve an ever closer relationship with our customers and partners. To this end, we will continue to combine knowledge, expertise, capability and dedication, in order to ensure a sustained and continuous supply of high-quality products and services, thereby achieving levels of genuine long-term partnership.

Wishing to integrate current and future projects for all our customers, below is a list of some of the most significant competitive features and advantages at Tecnolanema:

- / **Continuous focus on customer needs**
- / **Cumulative know-how from 25 years' experience in materials and machining**
- / **Multi-industry expertise and knowledge**
- / **A strategy of continuous modernization and qualification**
- / **Partnerships with some of Europe's leading suppliers of materials**
- / **A unique combination of team + process + technology**
- / **Dedicated machining areas.**

Thank you for allowing us to be part of your projects success!



## SHAPING YOUR PROJECTS

### TECNOLANEMA IN THE WORLD

Angola / Austria / Brazil / Cape Verde / Chile / China / Colombia / Croatia / Estonia / France / Germany / India / Italy / Luxembourg / Macedonia / Mexico / Mozambique / Netherlands / Portugal / São Tomé and Príncipe / Spain / Switzerland / Tunisia / United Kingdom / United States



WWW.  
TECNOLANEMA.  
COM



ENGINEERING  
SOLUTIONS



CNC  
MACHINING



3D  
CONTROL



NO  
PAPER



# SHAPING YOUR PROJECTS

WWW.  
TECNOLANEMA.  
COM



**Poly Lanema, Lda.**  
Zona Industrial de Ovar  
Rua do Brasil, N.º 143  
3880-108 Ovar - Portugal

T: +351 256 581 401  
F: +351 256 581 419

GPS: 40° 52' 55.164" -8° 37' 30.8742"  
tecnolanema@lanema.pt

Co-financiado por:

